



# Light Pole Spec Sheet Round Straight Steel 5" RSS-5

Pole Size (Inches)  
5 Inch Round Steel

Pole Wall Thickness  
11= 11 Gauge (.120" Thick)  
7= 7 Gauge (.188" Thick)

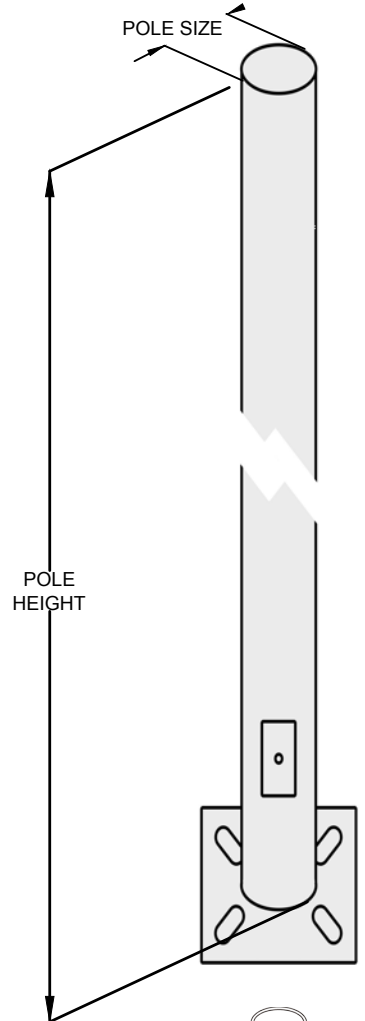
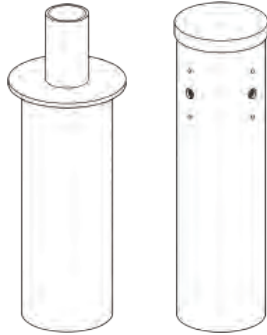
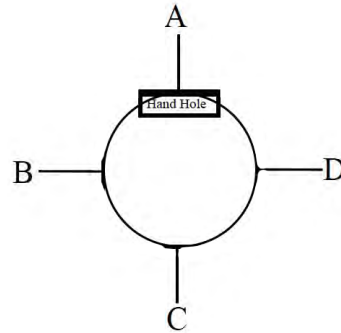
Pole Height (Feet)  
25,30

Fixture Mounting

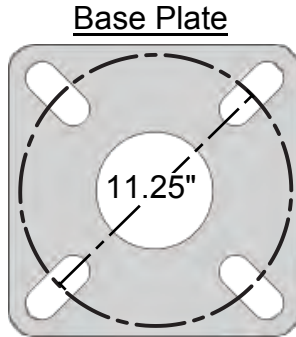
2= 2-3/8" OD slip fitter  
3= 3" OD Slip Fitter  
D=Drilled for 6" extended arm pole mount. With pole cap

Fixture Locations

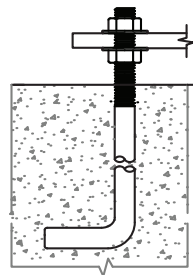
If Drilled for Arm Mount  
(View from top)



Powdercoat Color:  
DB=Dark Bronze  
WH=White  
BK=Black



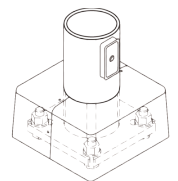
Anchor Bolt:  
(Blank) no anchor bolts  
AB= Ship with pole +\$78  
Size: 1"-8 X 36"  
Projection: 4-4.5"



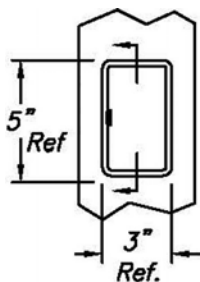
Hand Hole:  
3X5" reinforced hand hole  
Center of hole 18" from base plate  
3/8" Grounding Stud

Bolt Circle: 10-12.5"  
Base Plate: 11.75" x 1"

Base Cover:  
2 piece aluminum square cover.  
Powder coated to match.



## Ordering Information Pole Part Number



RSS-5-	-	-	-	-	-
RSS-5-	Thickness-	Height-	Fixture Mounting-	Color-	Anchor Bolts
	11	25	2	DB	(Blank)
	7	30	3	WH	AB
			D(ABCD)	BK	

If D; Enter sides to be drilled. (A,B,C,D)

**Example:** RSS-5-11-30-2-WH. RSS-5-7-20-D(ACD)-DB

Light Pole Systems, Inc.  
LightPoleSystems.com  
(714) 786-8983



1057 E. Imperial Hwy #155  
Placentia Ca. 92870  
6/18/19 1.1

## Light Pole Systems, Inc. Light Pole Load Chart Round Straight Steel-5 Poles

Part Number	Shape	Size	Wall Thickness Gauge	Pole Height	Max Load Capacities					
					80 MPH Wind Zone		90 MPH Wind Zone		100 MPH Wind Zone	
					Max EPA (SQ. FT)	Max Fixture Weight (lbs.)	Max EPA (SQ. FT)	Max Fixture Weight (lbs.)	Max EPA (SQ. FT)	Max Fixture Weight (lbs.)
RSS- 5-11-25	Round	5	11 (.120")	25	9.1	245	5.8	157	3.4	150
RSS- 5-11-30	Round	5	11 (.120")	30	4.3	150	3	125	2	100
RSS- 5-7-25	Round	5	7 (.188")	25	12	300	9.3	250	7.3	200
RSS- 5-7-30	Round	5	7 (.188")	30	8	200	6.5	160	4.7	125