



Light Pole Spec Sheet

Round Straight Steel 4" RSS-4

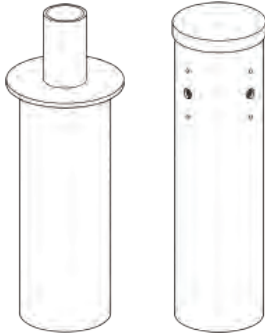
Pole Size (Inches)
4 Inch Round Steel

Pole Wall Thickness
11= 11 Gauge (.120" Thick)
7= 7 Gauge (.188" Thick)

Pole Height (Feet)
10,12,15,18,20,22,24

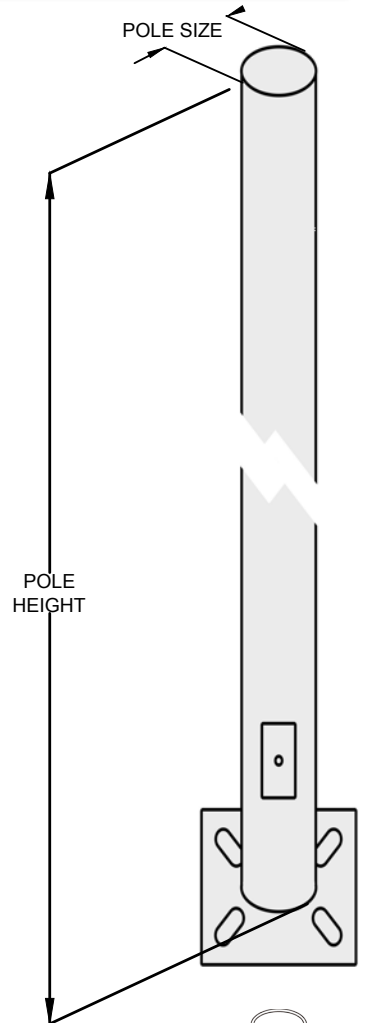
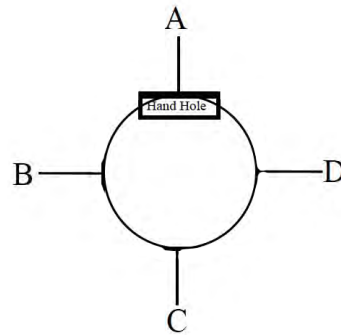
Fixture Mounting

2= 2-3/8" OD slip fitter
3= 3" OD Slip Fitter
D=Drilled for 6" extended arm pole mount. With pole cap

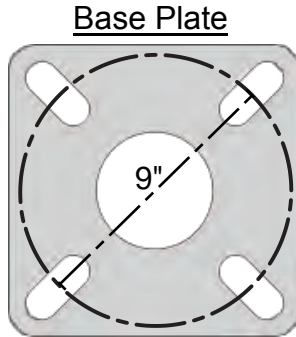


Fixture Locations

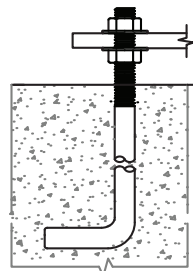
If Drilled for Arm Mount
(View from top)



Powdercoat Color:
DB=Dark Bronze
WH=White
BK=Black



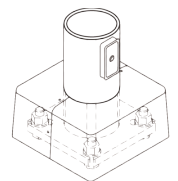
Anchor Bolt:
(Blank) no anchor bolts
AB= Ship with pole +\$48
Size: 3/4"-10 X 24"
Projection: 3.25-3.75"



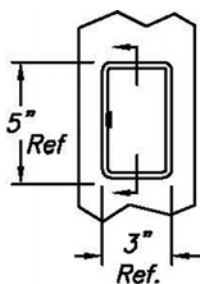
Hand Hole:
3X5" reinforced hand hole
Center of hole 18" from base plate
3/8" Grounding Stud

Bolt Circle: 8-10"
Base Plate: 9.5" x 3/4"

Base Cover:
2 piece aluminum square cover.
Powder coated to match.



Ordering Information Pole Part Number



RSS-4-	Thickness-	Height-	Fixture Mounting-	Color-	Anchor Bolts
RSS-4-	11	10	2	DB	(Blank)
	7	12	3	WH	AB
		15	D(ABCD)	BK	
		18	If D; Enter sides to be drilled. (A,B,C,D)		
		20			
		22			
		24			

Example: RSS-4-11-12-2-WH
RSS-4-7-25-D(AC)-DB-AB

Light Pole Systems, Inc.
LightPoleSystems.com
(714) 786-8983



1057 E. Imperial Hwy #155
Placentia Ca. 92870
6/18/19 1.1

Light Pole Systems, Inc. Light Pole Load Chart Round Straight Steel-4 Poles

Part Number	Shape	Size	Wall Thickness Gauge	Pole Height	Max Load Capacities					
					80 MPH Wind Zone		90 MPH Wind Zone		100 MPH Wind Zone	
					Max EPA (SQ. FT)	Max Fixture Weight (lbs.)	Max EPA (SQ. FT)	Max Fixture Weight (lbs.)	Max EPA (SQ. FT)	Max Fixture Weight (lbs.)
RSS -4-11-10	Round	4	11 (.120")	10	17.7	480	13.9	375	11.3	305
RSS -4-11-12	Round	4	11 (.120")	12	15	390	11.8	300	9.5	240
RSS -4-11-15	Round	4	11 (.120")	15	9.6	250	7.4	185	5.9	150
RSS -4-11-18	Round	4	11 (.120")	18	7	190	5.3	180	4.2	130
RSS -4-11-20	Round	4	11 (.120")	20	5.6	150	4.1	150	3.1	125
RSS -4-11-22	Round	4	11 (.120")	22	4.4	130	3.1	120	2.3	100
RSS -4-11-24	Round	4	11 (.120")	24	2.6	100	1.8	75	1.2	75
RSS -4-7-20	Round	4	7 (.188")	20	15	135	10.4	120	7	100
RSS -4-7-24	Round	4	7 (.188")	24	9.1	110	6	95	3.4	75