



Light Pole Spec Sheet

Round Straight Steel 3"

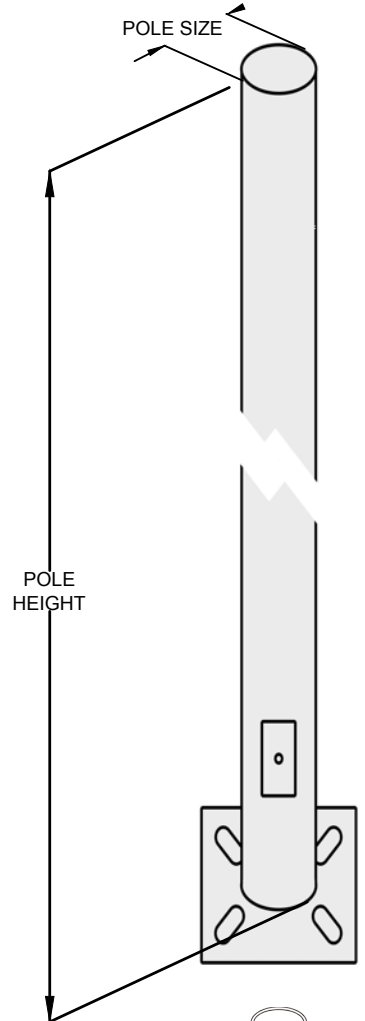
RSS-3

Pole Size (Inches)
3 Inch Round Steel

Pole Wall Thickness
11= 11 Gauge (.120" Thick)

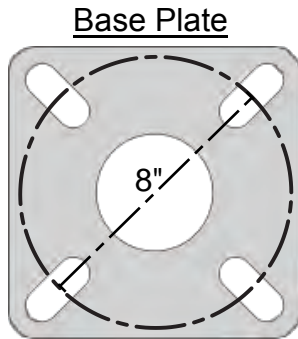
Pole Height (Feet)
8,10,12,14,16

Fixture Mounting
3= 3" OD Slip Fitter



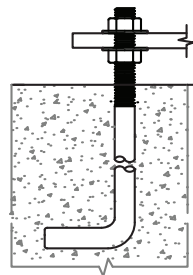
Powdercoat Color:
DB=Dark Bronze
WH=White
BK=Black

Hand Hole:
2.5X4" reinforced hand hole
Center of hole 12" from base plate
3/8" Grounding Stud

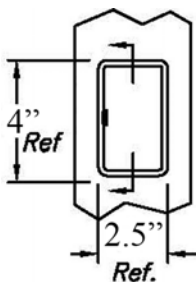
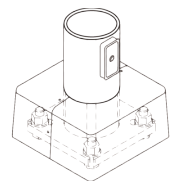


Bolt Circle: 6.5-9.5"
Base Plate: 9" x 3/4"

Anchor Bolt:
(Blank) no anchor bolts
AB= Ship with pole +\$48
Size: 3/4"-10 X 24"
Projection: 3.25-3.75"



Base Cover:
2 piece aluminum square cover.
Powder coated to match.



Ordering Information Pole Part Number

| RSS-3- | 11- | - | 3- | - | |
|--------|------------|---------|---------------------------------|--------|--------------|
| RSS-3- | Thickness- | Height- | Fixture Mounting- | Color- | Anchor Bolts |
| | 11 | 8 | 3 | DB | (Blank) |
| | | 10 | | WH | AB |
| | | 12 | | BK | |
| | | 14 | Example: RSS-3-11-8-3-WH | | |
| | | 16 | RSS-3-11-14-3-BK-AB | | |

Light Pole Systems, Inc.
LightPoleSystems.com
(714) 786-8983



1057 E. Imperial Hwy #155
Placentia Ca. 92870
6/18/19 1.1

Light Pole Systems, Inc. Light Pole Load Chart Round Straight Steel-3 Poles

| Part Number | Shape | Size | Wall Thickness Gauge | Pole Height | Max Load Capacities | | | | | |
|--------------|-------|------|----------------------|-------------|---------------------|---------------------------|------------------|---------------------------|-------------------|---------------------------|
| | | | | | 80 MPH Wind Zone | | 90 MPH Wind Zone | | 100 MPH Wind Zone | |
| | | | | | Max EPA (SQ. FT) | Max Fixture Weight (lbs.) | Max EPA (SQ. FT) | Max Fixture Weight (lbs.) | Max EPA (SQ. FT) | Max Fixture Weight (lbs.) |
| RSS -3-11-8 | Round | 3 | 11 (.120") | 8 | 12 | 295 | 9.5 | 230 | 7.2 | 200 |
| RSS -3-11-10 | Round | 3 | 11 (.120") | 10 | 10 | 250 | 7.7 | 190 | 6 | 175 |
| RSS -3-11-12 | Round | 3 | 11 (.120") | 12 | 7.7 | 195 | 5.8 | 145 | 4.4 | 130 |
| RSS -3-11-14 | Round | 3 | 11 (.120") | 14 | 6 | 175 | 4.4 | 130 | 3.3 | 90 |
| RSS -3-11-16 | Round | 3 | 11 (.120") | 16 | 4.6 | 125 | 3.2 | 100 | 2.3 | 60 |