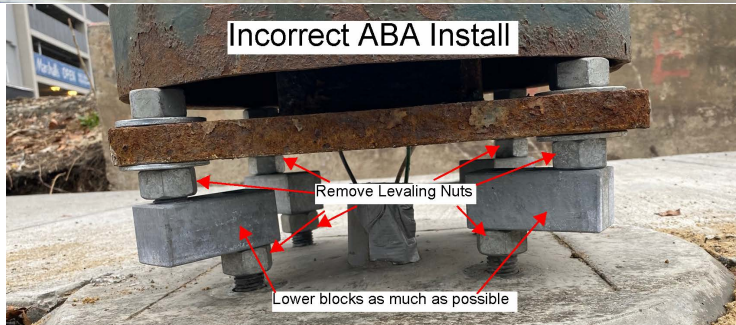
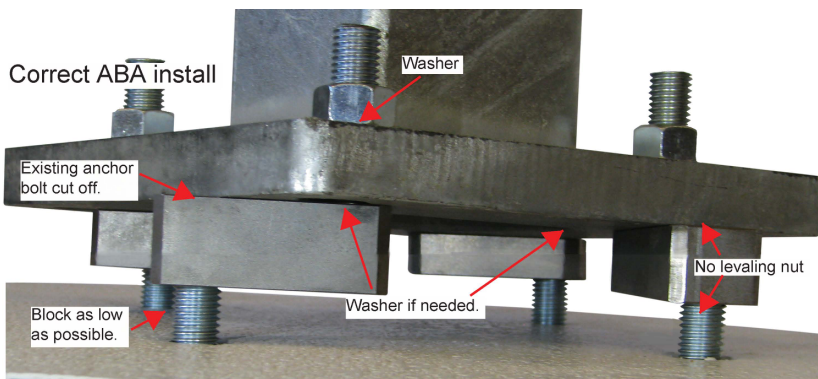


This will take you through the steps to install an Anchor Bolt Adapter (ABA) for the purpose of correcting an incorrect anchor bolt circle.

1. Remove any existing washers and nuts.
 - a. Ensure there is a minimum of 1 inch of useable thread on the shortest anchor bolt.
2. Install the Anchor Bolt Adapters onto the existing anchor bolts, ensuring there is at least the bolt width of thread engagement. (.75" of useable threads for a .75" bolt and 1" of useable threads for a 1" bolt)
 - a. Either of the 2 holes can be used, depending on the amount of offset that is needed.
 - b. Using a level, adjust the height each ABA until they are all at the same level.
 - c. Washers can be used if exact level cannot be found.
3. If your existing anchor bolt is long enough to protrude out of the top of the ABA, cut off the excess bolt.
 - a. Be cautious not to damage the threaded stud on the ABA.
4. Paint the inside of the unused ABA hole with a rust preventative paint.
5. Set you pole on the new ABA studs using NO leveling nuts.
 - a. Use the ABA block as a leveling nut. A washer can be used if to find exact level.
6. Install a washer and nut on each stud.
7. Tighten the new anchor nut 1/3 turn past snug fit.
8. Confirm that all nuts are tight, there is no pole movement, no loose washers, and the pole is level.
9. Installing a base cover is recommended to protect the pole base, hardware, and the public.
 - a. A custom extra-large base cover may be needed.



Light Pole Systems' Anchor Bolt Adapter EPA chart
 Max EPA in 100MPH Windzone with 1.3 Gust Factor
 ABA.75/1-.75 150lbs/ABA1 550lbs Fixture Weight

Pole Height	ABA.75 Center Hole Adjustment 2.2"	ABA.75 Outside Hole Adjustment 4.4"	ABA1 Center Hole Adjustment 2.5"	ABA1 Outside Hole Adjustment 5"
15	17	7	>20	12
20	13	5	>20	9
25	11	5	20	7
30			15	6
35			13	5
40			12	5

ABA1-.75. See Spec Sheet for details.
 Use ABA.75 Max EPA Ratings and ABA1 Adjustment.

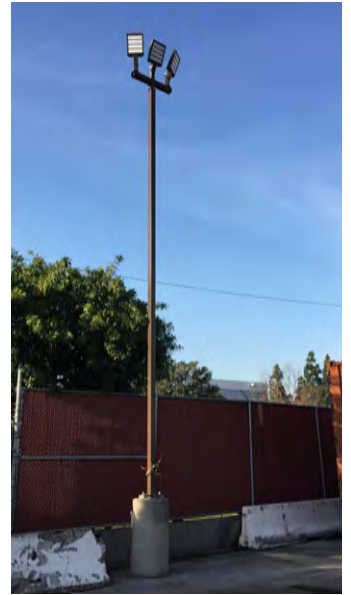
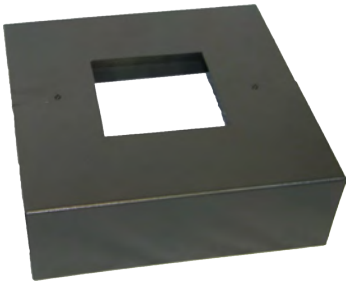


Custom Light Poles and Accessories

Custom Light Poles, truckloads to single poles made to order in 7-10 business days. Specializing in light poles to fit your exact need. From base plates with additional holes to specialty designed tenons to mount any fixture.

Call us for all your light pole related needs.

2 Piece Aluminum Base Cover,
Powder Coated to match.



Adapter plates to fit a pole onto
any footing.

Powder coated or Galvanized



Custom Pole Fitters and Tenons.
Fit any fixture on any pole.
Powder coated with set screws.



Custom Shoebox fixtures
made to match old fixtures.
Available in HID or empty
for LED Retrofit Kits.

Light Pole Systems, Inc.
LightPoleSystems.com
(714) 786-8983



1057 E. Imperial Hwy #155
Placentia Ca. 92870