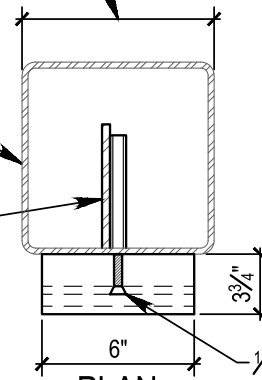


DESCRIPTION:

UNIVERSAL LOCKING HAND HOLE
COVER (PATENT PENDING) REPLACES
EXISTING STOCK COVER AND LOCKS
WITH 1"x $\frac{5}{16}$ " KEYED OR COMBO
PADLOCK (SUPPLIED BY OTHERS)

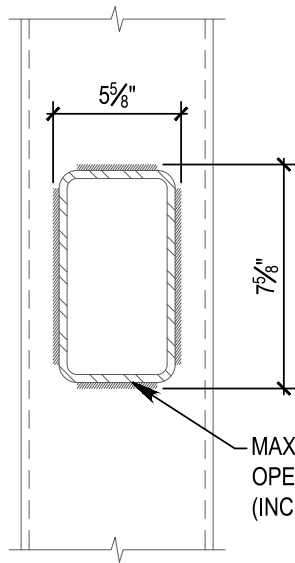
EXISTING POLE OUTER
DIAMETER 6" MIN

POLE
BACKING BAR



PLAN

$\frac{1}{2}$ "-13x7" FLAT HEAD
SOCKETS (BLACK OXIDE)



ELEVATION

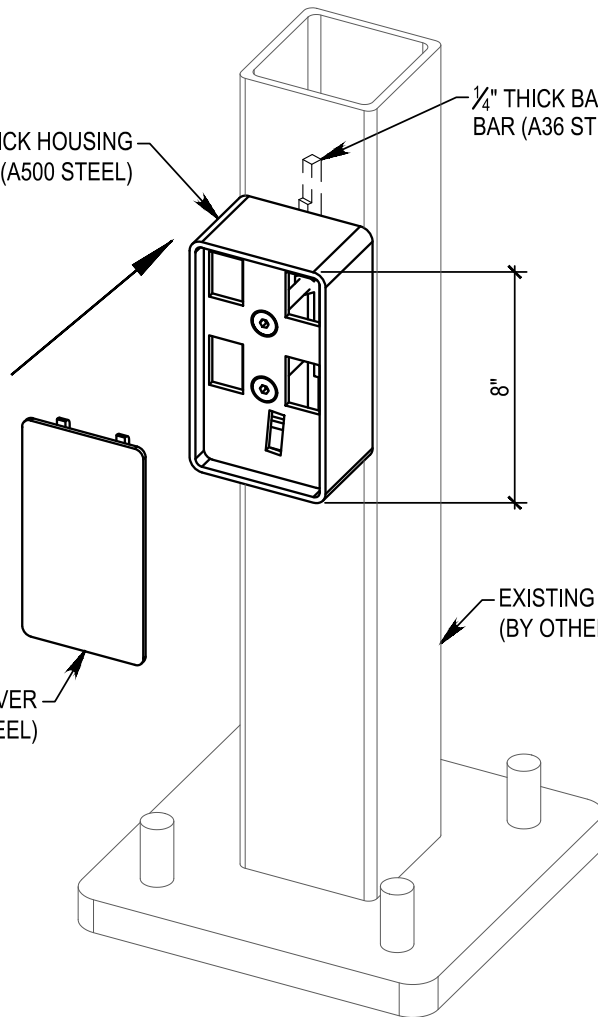
MAXIMUM HAND HOLE
OPENING DIMENSIONS
(INCLUDING WELDS)

0.188" THICK HOUSING
(A500 STEEL)

$\frac{1}{4}$ " THICK BACKING
BAR (A36 STEEL)

STEEL COVER
(A36 STEEL)

EXISTING POLE
(BY OTHERS)



ISOMETRIC



Light Pole Systems, Inc
lightpolesystems.com
(714) 786-8983
1057 E. Imerial Hwy #155
Placentia Ca. 92870

TYPE: UNIVERSAL LOCKING HAND HOLE COVER
FINISH: COVERS SHIP PRIMED. FINISH AVAILABLE ON SPECIAL ORDER
U.S Patent # 9,752,344

6 HHC B S

POLE TYPE (R= ROUND, S=SQUARE)
ATTACHMENT METHOD (B= BOLTED, W= WELDED)
HAND HOLE COVER
COVER WIDTH

MODEL#:
6HHCBS

SCALE:
NONE

DATE:
12/3/19