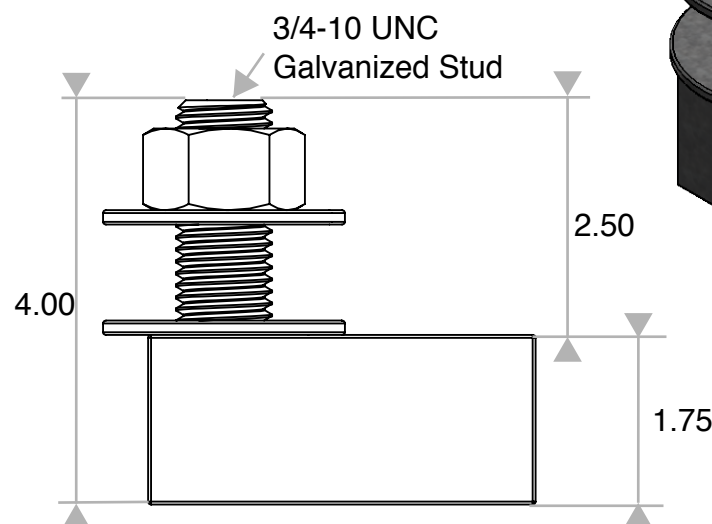
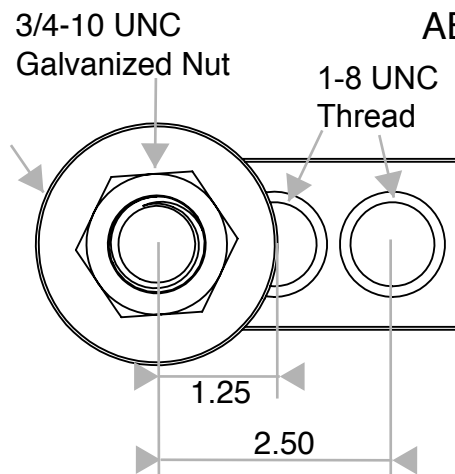
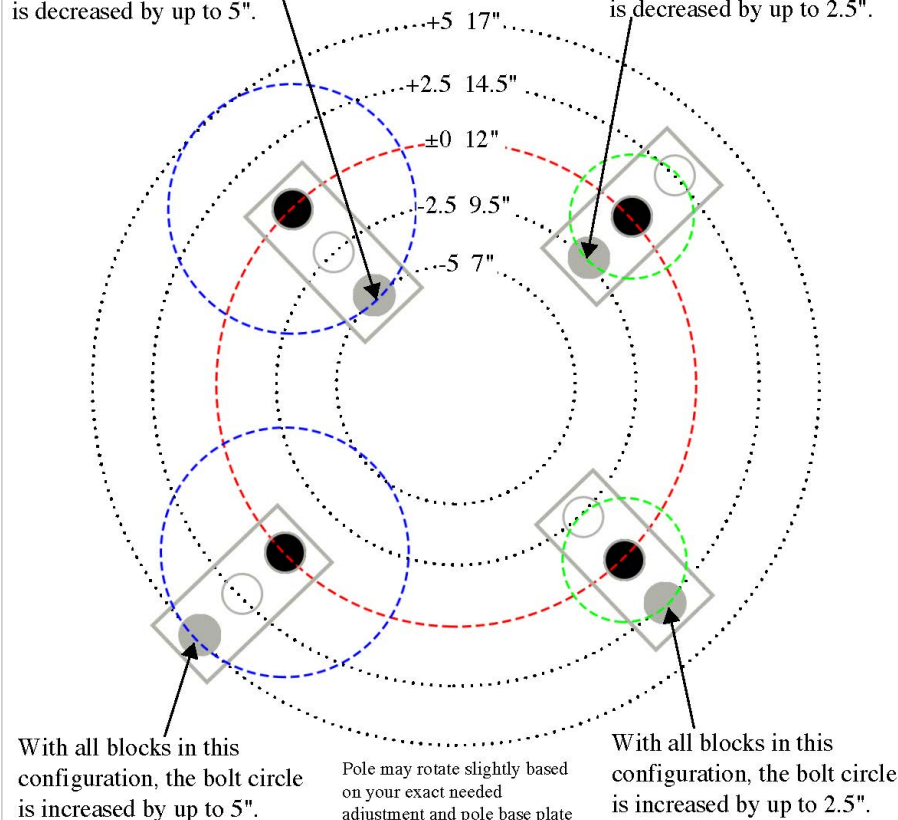


The Anchor Bolt Adapter 1"-.75" allows an increase or decrease of a bolt circle by up to 5", and movement of bolt square by 2.5", and allow a 3/4" base plate to bolt to 1" anchor bolts. For instructions, see Installation Guide.

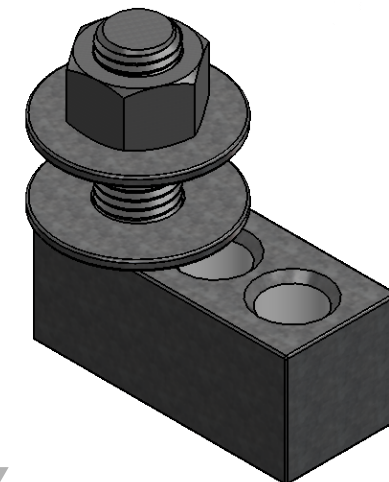
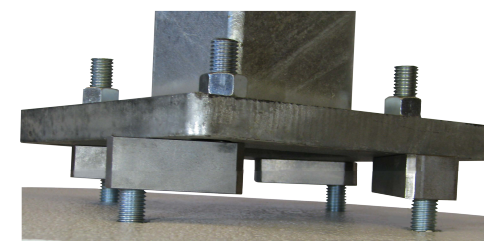
With all blocks in this configuration, the bolt circle is decreased by up to 5".

(2) 3/4-2.00 Hardened Washer

With all blocks in this configuration, the bolt circle is decreased by up to 2.5".



ABA1-.75 is sold in sets of 4 blocks.



ABA.75: 25' POLE, 150 LBS.MAX FIXTURE WEIGHT, 100MPH MAX:
EPA 11 USING CENTER HOLE. EPA 5 USING OUTSIDE HOLE.

Max EPA in 100MPH windzone
150lbs Fixture Weight

Pole Height	ABA1-.75 Center Hole	ABA1-.75 Outside Hole
15	17	7
20	13	5
25	11	5



PROPRIETARY AND CONFIDENTIAL
THE INFORMATION CONTAINED IN THIS DRAWING IS THE SOLE PROPERTY OF LIGHT POLE SYSTEMS, INC. ANY REPRODUCTION IN PART OR AS A WHOLE WITHOUT THE WRITTEN PERMISSION OF LIGHT POLE SYSTEMS, INC. IS PROHIBITED.

U.S Patent # 10,450,740

UNLESS OTHERWISE SPECIFIED:

DIMENSIONS ARE IN INCHES
TOLERANCES:
FRACTIONAL±
ANGULAR: MACH ± BEND ±
TWO PLACE DECIMAL ± .005
THREE PLACE DECIMAL± .005

INTERPRET GEOMETRIC
TOLERANCING PER:

MATERIAL
1018 STEEL

FINISH
HOT DIP GALVANIZED

DO NOT SCALE DRAWING

NAME
DATE

DRAWN
CHECKED
ENG APPR.
MFG APPR.

Q.A.



PART#: ABA1-.75

TITLE:
ANCHOR BOLT ADAPTER, 1"-.75"

SIZE DWG. NO.

A

REV
2.3
12/3/19

SCALE: 1:2 WEIGHT: 16lbs.